

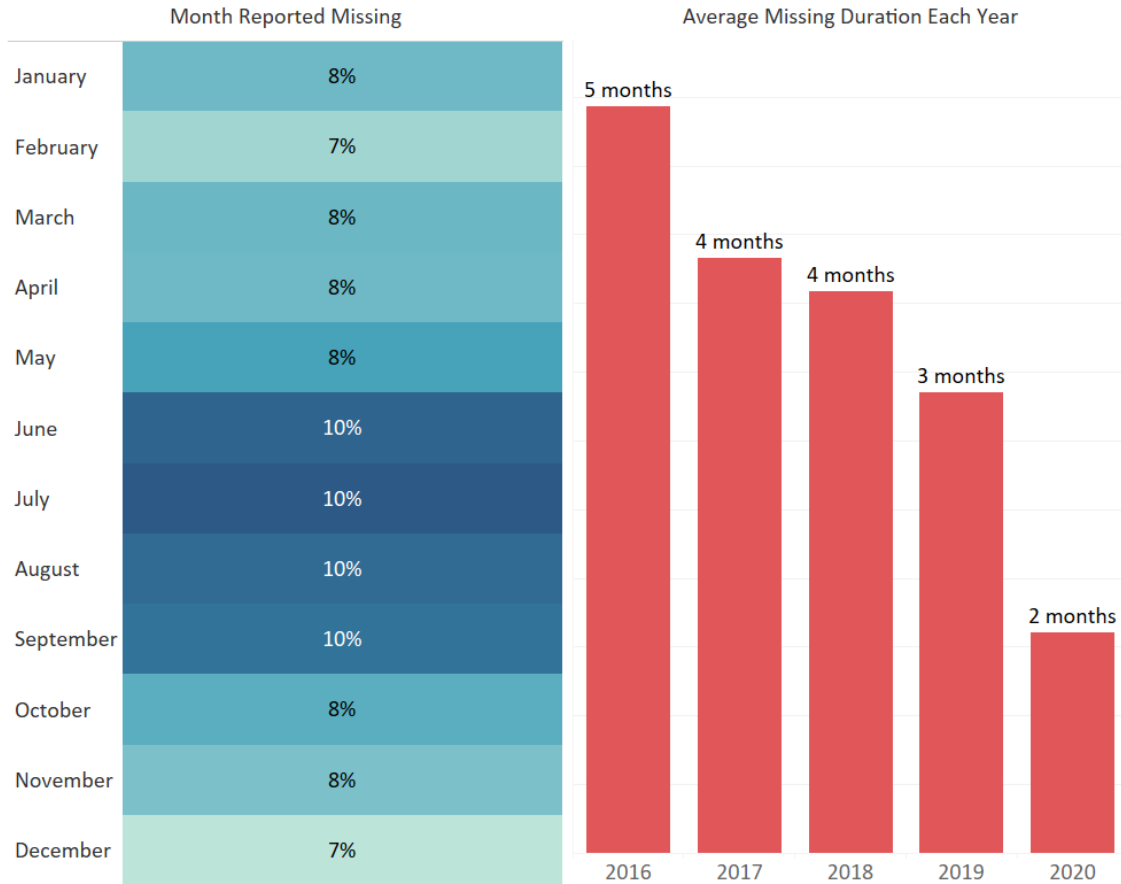
Family Abductions

2021 Update

CHILDREN

This data analysis examines Family Abductions reported to the National Center for Missing & Exploited Children between 1/1/2016 and 12/31/2020.

All Children

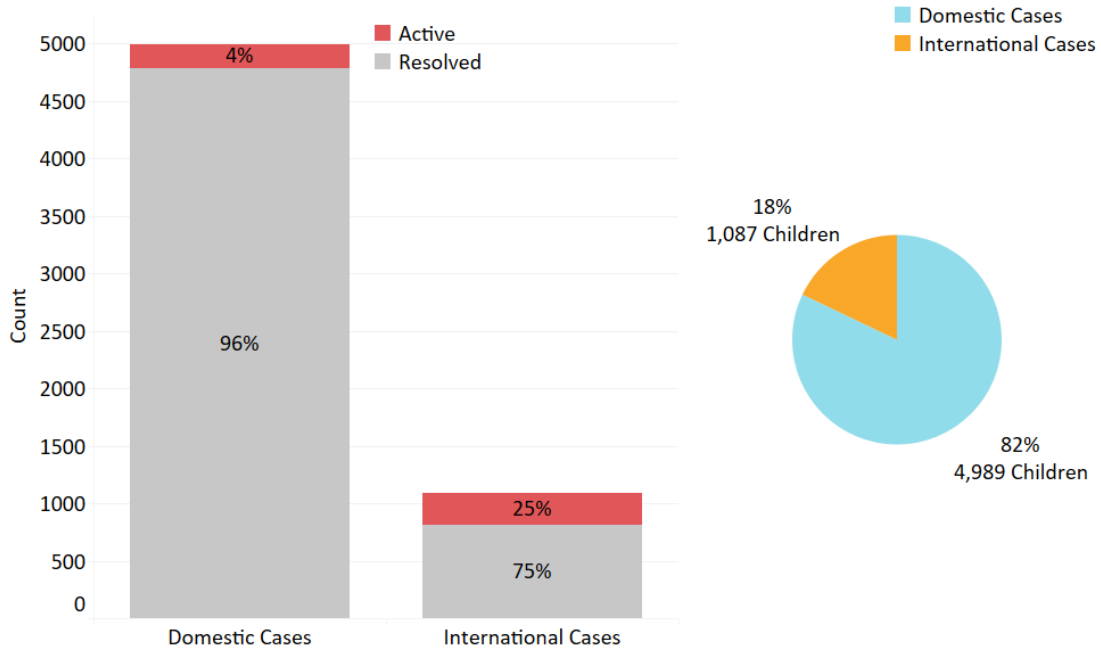


<p style="text-align: center;">6,076</p> <p style="text-align: center;">Children abducted by a family member between 2016 and 2020</p>	<p style="text-align: center;">64%</p> <p style="text-align: center;">Children between the ages of 0 and 6 years</p>	<p style="text-align: center;">8%</p> <p style="text-align: center;">Percentage of active cases</p>
<p style="text-align: center;">21</p> <p style="text-align: center;">Children recovered deceased</p>	<p style="text-align: center;">4 months</p> <p style="text-align: center;">Average number of months missing</p>	<p style="text-align: center;">Summer</p> <p style="text-align: center;">Most common season for missing incidents (30%)</p>

- o 43% of all children were recovered by police investigation
- o 24% were turned in by a family member or friend
- o Nearly all children were recovered alive (99.7%)
- o 57% of deceased children were homicide victims
- o Deceased children had an average missing duration of 3 months

Domestic Versus International

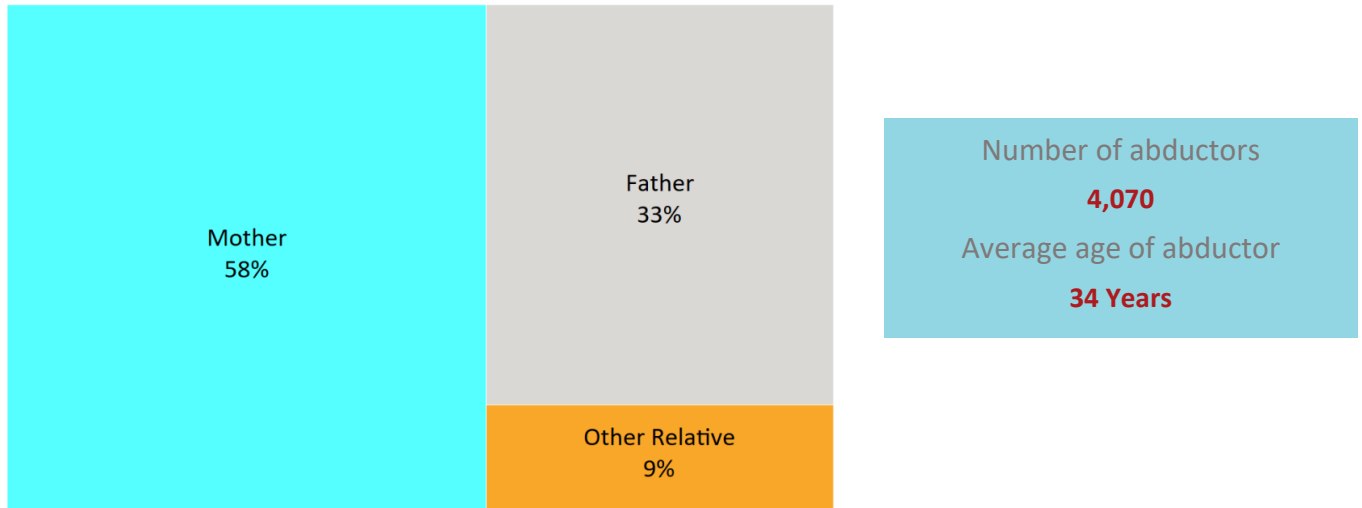
- o Between 2016 and 2020 International cases had an average missing duration of one year
- o For international cases the highest recovery method was police investigation (28%)



Average missing duration for international unresolved cases: **42 months**
 Missing duration for unresolved domestic cases: **81 days**

	2016	2017	2018	2019	2020
Domestic Cases	3 months	3 months	2 months	3 months	1 month
International Cases	15 months	14 months	12 months	9 months	4 months

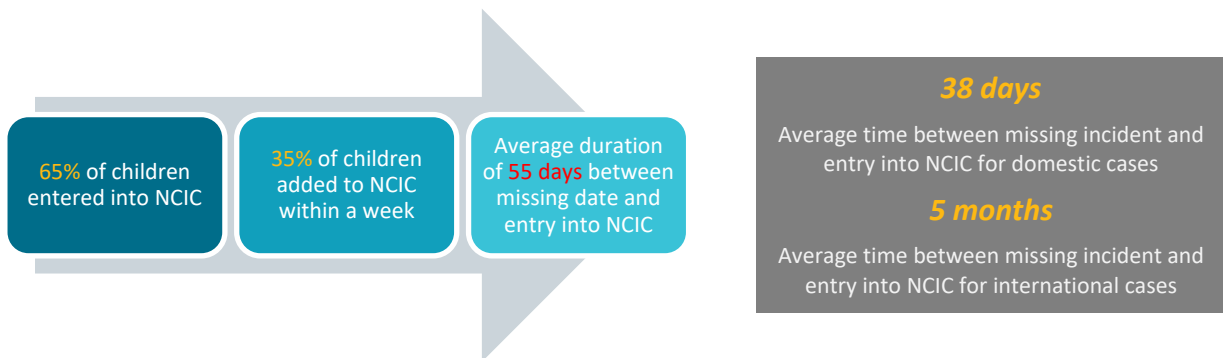
ABDUCTORS



RESPONSE TO FAMILY ABDUCTIONS

National Crime Information Center (NCIC)

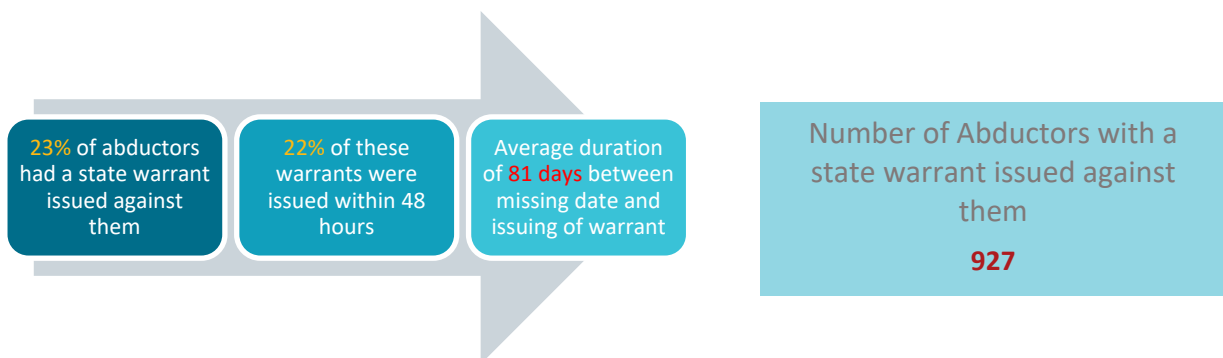
A longer time period before entering the child into NCIC corresponded to a longer missing duration



Federal law (34 U.S. code § 41308) ensures no waiting period before law enforcement can accept a missing child report and requires law enforcement to enter a missing child into NCIC within two hours of receiving the report. Law enforcement may be unable to enter a child into NCIC for a variety of reasons. These specifics are not available to NCMEC on a case-by-case basis.

State Arrest Warrants

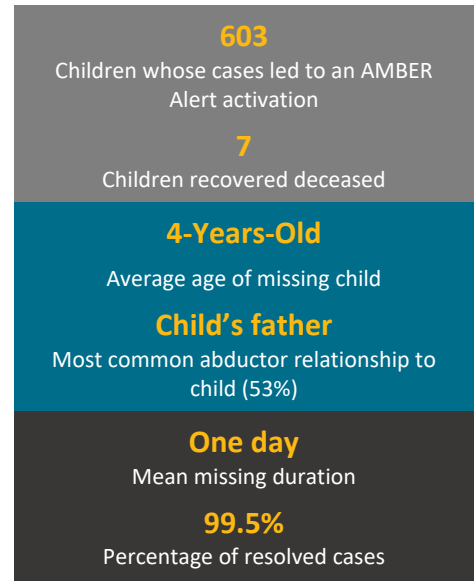
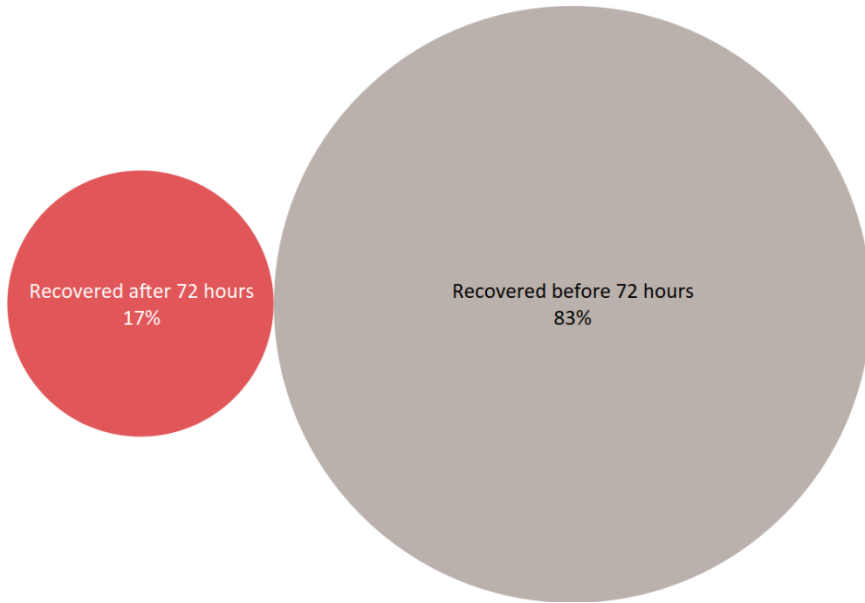
A longer time period before issuing a state warrant corresponded to a longer missing duration



- o Just under 2 months (58 days) was the average time between abduction and issuing of a state warrant in resolved cases
- o 10 months was the average time between abduction and issuing of a warrant in an active case

AMBER Alerts

A longer time period before activating an AMBER Alert corresponded to a longer missing duration



- o There were 495 abductors involved in these cases
- o Three of these children were killed in an apparent murder-suicide